



Large Format Scanning & Printing e-news

Scanning Arts™ Software Now Available Standalone

Scanning Arts™, originally developed as the software engine for the EIS series, a turn-key, large format multi-function system introduced by Paradigm Imaging in May 2005, is now available as a standalone software product to serve a broad range of applications including Facilities Management, CAD, GIS, Archiving, Reprographics and digital printing.



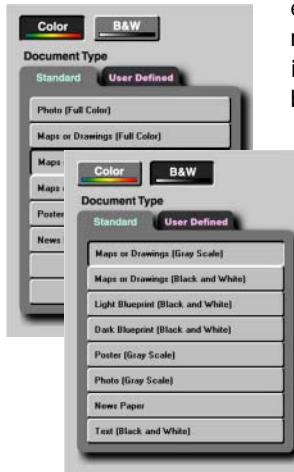
The Scanning Arts™ software is fully compatible with stand-alone Graphtec large format color scanners, the CS400, CS500 and CS600 series. By integrating with these Graphtec scanners

and the JW1000 series printer or other popular large format ink jet printers, Scanning Arts™ provides a complete large format multi-function solution for scanning, copying, printing and emailing of large format documents and graphic images.

With its full-featured and easy-to-use graphical interface, Scanning Arts™ incorporates the feel and touch of conventional office equipment. A variety of large format projects such as document archiving, copying, reproduction and file communication are managed seamlessly without extensive operator training.



Scanning Arts™ provides optimized default settings for a variety of original document types including maps, drawings, blueprints, photos



and posters, thereby providing touch-button operation for many projects involving large format scanning and copying, assuring even untrained operators of a quality result.

User-defined settings are also provided for advanced users, allowing them to tailor the process to their specific needs.

Scanning Arts™ also incorporates accounting and job tracking functions with a password protected log-in dialog for secured job control and management of cost allocation per project. The tracking and log information can be output in CSV format for further data manipulation and analysis.



Scanning Arts' user-friendly, comprehensive features provide the perfect solution for the multi-operator and multi-task work environments where simplicity, enhanced security management and cost control are required.

Inside this issue:

Scanning Arts™ software available as a standalone product	1
Scanning Arts™ primary controls and additional features	2
New Popup Tradeshow Displays from Paradigm Imaging	2
Employee Profile – Meet Brad Phillips	3
Clortrac Superwide Scanner Smack Down	3
Graphtec scanners with 3-year warranty	4
Sales Locations	4

Special points of interest:

- Scanning Arts™ software is the ideal solution for multi-operator work environment.
 - Full-featured multifunction
 - Easy-to-use
 - Built-in job tracking
 - Fully compatible with Graphtec color scanners
- Affordable popup displays
 - Compact and light weight
 - A variety of choices
 - Starting from \$595
- Great savings with scanner promotions, Clortrac & Graphtec

Continues

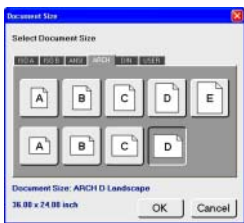
Scanning Arts™ (continued from page 1)

The opening screen of Scanning Arts™ software allows the user to select the mode of operation, COPY, PRINT, SCAN and EMAIL, which leads to its primary control screens. The comprehensive user-interface of each primary control screen incorporates a series of large buttons for relevant functions, making the system operation intuitive and compatible with touch-screen monitor (optionally available) as illustrated below.

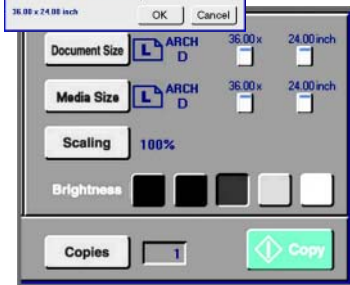


Color/B&W
Selects the color mode for proceeding operation

Document Type
Selects the type of original document from 14 Standard types with optimized settings or User Defined setups



Document Size
Selects the size of original document from a set of standard document formats and orientation or user-defined sizes



Print/Media Size
Selects the size of print output from a set of standard document formats and orientation or user-defined sizes

Scaling
Allows the operator to exercise manual or automatic scaling to fit the specified Print/Media Size

Brightness
Adjusts the brightness of Print or Copy output

Copies
Sets the number of copies/prints



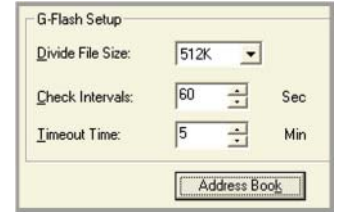
Preview with zoom-in feature

The User Defined document setup window allows the user to access a series of fine adjustment tools including Color Adjustment (Hue, Saturation, Lightness, Gamma, Brightness and Contrast), Black/White Point Adjustment (RGB control), Edge Sharpening, Automatic Despeckling, Automatic Deskew, Moiré Pattern Removal and Crease Reduction. In addition, this screen provides adjustment preview windows with zoom-in feature for verifying the effect of applied adjustments. Users can program, with



unique identification titles, up to 14 job-specific user settings that best suit the type of original documents and results for touch-button recall.

For those projects involving an email transmission of large images or documents, the G-Flash file management utility (included with the Scanning Arts™) provides practical assistance. The G-Flash utility automatically divides a large document file into a number of segments for more manageable transmission over the Internet. At the recipient site of transmission, the G-Flash Receiver utility automatically re-assembles these segmented files to restore the original document.



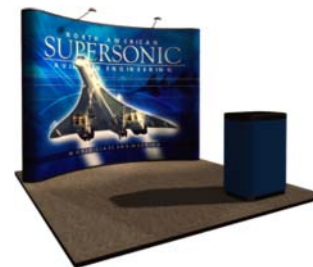
Scanning Arts™ is compatible with Windows® XP Professional operating system and performs best with a Pentium® 4 based system with a minimum of 1 GB available RAM. The high-performance, Windows® XP Pro based Rocket™ controller housing a 2.8 GHz Pentium® 4 processor with 1GB DDR and 80 GB hard drive, and an integrated touch screen monitor are optionally available for further augmenting the performance of the easy-to-use Scanning Arts™ system.



New Popup Tradeshow Displays

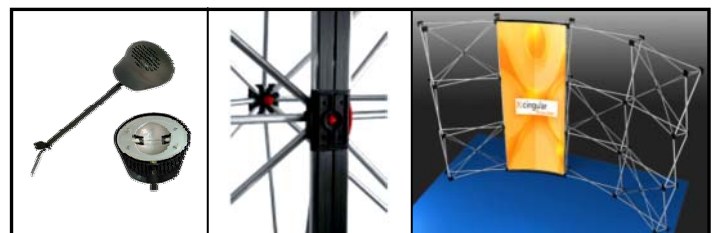
So easy to setup...it almost assembles itself

Paradigm Imaging Group recently announced the addition of several Popup Tradeshow booths, Panel displays and Tabletops to its line of tradeshow exhibit and display products.



Paradigm now offers a large selection of pop up packages and exhibit stands in sizes ranging from tabletops to 20 foot popup packages, panel systems, banner stands, exhibition furniture, lighting, cases and more.

The new popup display systems are extremely simple to set up and a tradeshow booth can be completed in a matter of minutes. Just attach the lights, pop up the frame, roll on fabric panels or custom graphics, and it's ready for the show.

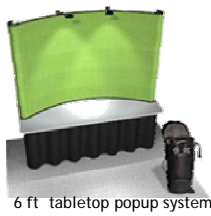


Halogen Lights

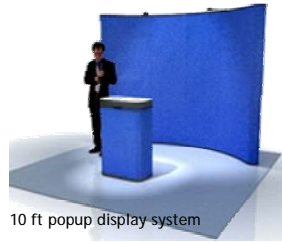
Hinged Channel Bars

Fabric or Graphic Panels

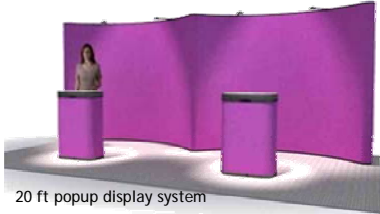
The display systems are manufactured in the United States with a lifetime warranty and offered at exceptionally attractive prices.



6 ft tabletop popup system



10 ft popup display system



20 ft popup display system

New Popup Product Features:

- Lightweight and compact - reduces transportation cost
- Can be assembled without tools eliminating setup and tear down fees
- A choice of fabric or graphic panels
- Available in a variety of sizes and configurations including 6 ft tabletop, 8 ft tabletop, 10 ft booth and 20 ft booth
- Available with package pricing that includes display, lights and case
- Available with or without graphics.
- Flexible, durable, easily reconfigurable
- Pricing starts from \$595 (6 ft tabletop system)
- Lifetime warranty

The tradeshow displays can be purchased online at www.paradigmimaging.com

Meet the Paradigm Imaging Group Employee! – Brad Phillips



Brad Phillips is one of Paradigm Imaging's graphics and scanning technicians. Brad came to Southern California from his hometown of Roseburg Oregon to attend the Art Institute of California. Brad recently graduated with a Bachelor of Science degree in Animation.

His creative talents are appreciated in the graphics department where he assists many of the artists who bring

fine art in to be scanned. Brad is knowledgeable in the use of the ArtistScan flatbed scanner. His artistic eye is helpful in making adjustments or optimizing the colors in a scan to achieve the most accurate color reproduction.

Oscar Villa says that he appreciates having Brad in the graphics department. "Brad has knowledge that is useful in everything from scanning to printing. He is a great person to have around."

When Brad is not hard at work here at Paradigm he enjoys going to the movies and gaming. He is a die-hard gamer and owns an X-Box, PlayStation and a GameCube. His artistic talents are expressed by painting, drawing and writing movie scripts.

Don't miss this months exceptional deals on scanners!
 – Colortrac and Graphtec promotions end July 31st –

SUPERWIDE

THE SUPERWIDE SCANNER
SMACK DOWN IS BACK!

Colortrac Smacks Down The Competition With Killer Deals on 48" & 54" Wide Scanners

- \$7,680 Instant Rebate (5480e Model)
- Free Shipping (up to \$350)
- Free VB-Index Software (\$695 value)

\$8,725 Total Savings!



4860e - 48" Wide
5480e - 54" Wide

Dealers: Ask about our Sales Rep. Incentive Program.

2

Year On-Site Warranty

The Best Warranty In The Industry!

Colortrac 4860e MSRP is \$23,875, Total Savings is \$6,475 including the instant rebate of \$5,430. Colortrac 5480e MSRP is \$31,625, Total Savings is \$8,725 including the instant rebate of \$7,680. Free shipping is 3-5 day service. Additional shipping costs may apply to Alaska, Hawaii and Canada. Offer expires July 31, 2005.



Our Business is Your Image



Paradigm Imaging Group

www.SCANtopia.com or Call 888.221.7226
From Canada Call: 714.432.7226

3 Year
On-Site
Warranty

For a
Limited Time
Get a 3 Year
On-Site
Warranty on
All Graphtec
Scanners!

GRAPHTEC

Dealers: Ask about our Sales Rep. Incentive Program.

Available on the IS200, IS200 Pro, CS300, CS400, CS500, CS500 Pro, CS600 and CS600 Pro scanners. Warranty coverage available in the (United States including Alaska and Hawaii) and Canada. Offer expires ~~March 31, 2005~~ July 31, 2005

The **NEW CS600 42"**, full color scanner with the ability to scan thick, rigid originals up to 0.8" thick. The **CS600** is the only scanner of its kind that features a complete "hands-free" automatic thickness control function, Which automatically recognizes the thickness of the material being scanned without any user intervention.



- Faster...*
- Sharper Images...*
- More Reliable...*
- More Affordable...*

CALL NOW!
888.221.SCAN

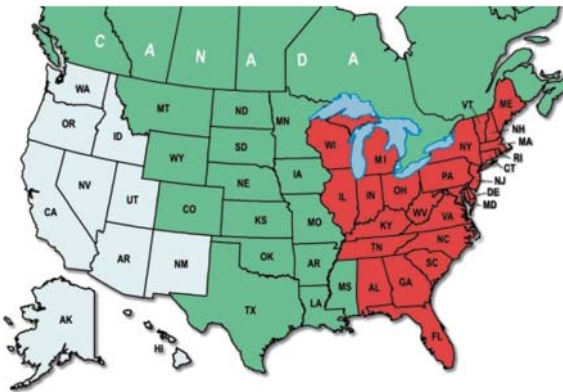


Paradigm Imaging Group

www.SCANtopia.com or Call 888.221.7226

From Canada Call: 714.432.7226

Locate Your Paradigm Imaging Sales Manager



[Eric Hanson](#)

eric@paradigmimaging.com



[Mike Ireson](#)

mike@paradigmimaging.com



[Frank Diument](#)

frankd@paradigmimaging.com

Click on your state to e-mail your nearest sales manager. All of our sales representatives can be reached at 1-888-221-7226.

C o n t a c t & C o m p a n y I n f o r m a t i o n



Paradigm Imaging Group
 1590 Metro Drive
 Suite 116
 Costa Mesa CA, 92626

Toll Free: 888 221 7226
 Phone: 714-432-7226
 Fax: 714-432-7222

Visit Our Dealer Website at:
www.SCANtopia.com

Paradigm Imaging Group is a large format solutions provider whose expertise extends from scanning and printing products to imaging systems integration, software development and product distribution. Paradigm counts among its clients, companies in reprographics, architecture, engineering, construction and manufacturing, as well as numerous public agencies at all levels of government. Since 1989, Paradigm has grown to become a leading provider of large format scanning and document management solutions. As both a service bureau and a custom solutions provider, Paradigm Imaging Group is uniquely positioned to share with it's clients the experience gained from using imaging products on a day-to-day basis and the knowledge gained through developing document imaging products.