



Large Format Scanning & Printing e-news

The New EIS Large-format Multifunction System Introduced at 2005 IRgA

Paradigm Imaging Group unveiled its new EIS system at the 2005 IRgA annual convention held in Las Vegas, Nevada.



EIS Ultima

The EIS (Express Imaging Station) series is a turn-key, multi-function system designed to provide the all-in-one solutions for scanning, copying, printing and emailing large-format documents and graphic images in applications including Facility Management, CAD, GIS, AEC, Reprographics and Digital Printing. The EIS series provides high performance and sophisticated features while maintaining a user-friendly graphical interface for intuitive operation.

Flexible System Configuration...

Three basic system configurations are available, making the EIS series unique and flexible to address specific work environment and application needs. All EIS systems include the Rocket™ Controller pre-installed with the Scanning Arts™ software and matched with a choice of four 42" color scanner models to further augment the system flexibility.

The EIS-Ultima is an all-in-one, fully integrated system with a touch-screen control and space-saving single footprint

architecture providing the complete solution for scanning, printing, copying and emailing. The EIS Flex offers all features and benefits of the EIS Ultima with the flexibility of integrating with an existing printer (HP® DesignJet® 500, 800 and others). The EIS Solo, a standalone system, provides the same functionality as the Ultima and Flex systems while incorporating the system controller in a desktop configuration with a 17" LCD monitor and the ability to interface with existing network printers for output. The EIS system's US list price ranges from \$16,995 to \$28,995, depending on the system configurations, to flexibly meet the variety of job requirements and budget.



EIS Solo

Fully Integrated...

All of the system components are integrated for the best performance and easy of use. The high-performance Rocket™ controller, in the heart of EIS system, is pre-installed with the Scanning Arts™ system software and delivers ample resources for seamlessly managing large graphics and documents. Consolidated system configuration of EIS-Ultima and EIS-Flex provides easy access and convenience in day-to-day large-format projects.

Continues..



Inside this issue:

The new EIS Large-format Multifunction System Unveiled at IRgA 2005	1
EIS System Performance and Features .. Performance Ease of Use Reliability	2
Employee Profile – Meet Eric Hanson	3
Friday the 13th Became a Lucky day.. JW1100 presented as a raffle prize at IRgA 2005	3
For a Limited Time Get a FREE 3-Year Warranty on All Graphtec Scanners.	4
Sales Locations	4

Special points of interest:

- Finally, the fully integrated large-format EIS multifunction system is here!
- Features and benefits of new EIS system.
 - . Flexible
 - . Fully integrated
 - . User-friendly
 - . Reliable
- Graphtec 3-Year Onsite Warranty Promotion has been EXTENDED now through July!

EIS System (continued from page 1)

Performance...

High-performance, precision scanning is made available with the industry-leading Graphtec CS series scanners, incorporating the innovative contact image sensor technology. A choice of four scanner models, all featuring 42" scanning width and 600 dpi optical resolution with black & white, grayscale and full-color capability, ensures the highest performance required in a variety of applications. The 'Pro' scanner models yield 4800 dpi digital resolution and a maximum scanning speed of 9"/sec monochrome and 3"/sec color, thereby further enhancing overall system versatility and productivity.



The Graphtec JW1000, an integrated output printer of EIS Ultima system, provides 6-color, 36" wide, high-speed printing of engineering drawings and photorealistic graphics at 1200dpi resolution. With its state-of-the-art print heads incorporating precision, high-density nozzle placement technology with 1280 nozzles per color, the JW1000 delivers 323 sqft/hr maximum print speed in draft mode (129 sqft/hr in normal mode).



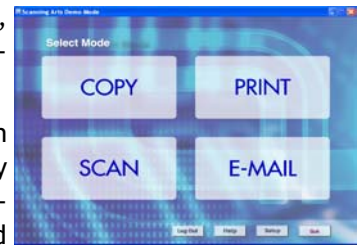
The EIS Ultima integrated with a CS-Pro scanner makes the scanning and copying projects effortless and productive, enabling the reproduction of 2' x 3' original in 90 seconds for a black & white drawing and 2 minutes for a full color poster (both in draft print mode).

Ease of Use...

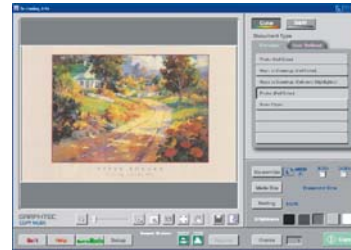
The Scanning Arts software, preinstalled on the Rocket™ Controller, provides an easy-to-use interface and intuitive operation while maintaining the powerful and full-featured capabilities required for a broad range of projects. The large control buttons on its main control screen and its sub-layer windows are

designed to provide a feel and functionality similar to that of an office copier, assuring even untrained operators of a quality result.

The Scanning Arts™ system software performs an array of functions including, scanning, printing, copying and email. It also incorporates accounting and job tracking



Scanning Arts' main screen

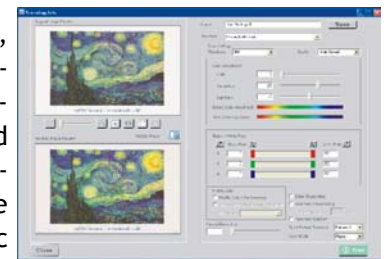


Scanning Arts' COPY screen

features with password-protected log-in dialog for processing sensitive documents and management of cost allocation per project. Scanning Arts™ provides optimized default settings for a variety of original document types including maps, drawings,

blueprints, photos and posters, thereby providing touch-of-a-button operation for large-format scanning and copying tasks.

User-defined settings, along with the fine adjustments and preview windows, are also provided for advanced users, allowing them to tailor the process to their specific preference.



User Defined/color adjustment screen

Reliability and support...

All of the EIS system components are manufactured with high quality standard and integrated for dependable operation, and further backed by industry-leading warranty programs. All scanner models integrated with the EIS system are covered by comprehensive 3-year on-site warranty, indicating unsurpassed quality and reliability. The EIS *Flex* and *Solo* systems are provided with standard 3-year on-site warranty for entire system and an upgrade option is available for the EIS *Ultima* system. The standard warranty programs and upgrade options assure the peak performance of EIS systems and protect users' investment for years of operation.

There are 12 EIS system configurations available (3 basic systems with a choice of 4 scanner models for each). Available system configurations with their hardware features and warranty coverage are shown in the matrix on the next page.

(EIS related articles will follow in the next issue of Newsletter)

EIS System Configuration Matrix			
	Ultima	Flex	Solo
System Structure/Ergonomics			
Single Footprint Design	●	●	
Standalone/Desktop			●
Scanner			
A Choice of 4 Scanner Models CS500, CS500Pro, CS600, CS600Pro	●	●	●
Controller & Software			
Integrated Rocket™ Controller	●	●	
Desktop Rocket™ Controller			●
15" Touch-screen Monitor	●	●	
17" LCD Monitor			●
Scanning Arts™ System Software	●	●	●
Printer			
JW1000 Printer for Output	●		
User-supplied Printer		●	●
Warranty Coverage			
3 year Onsite Warranty/Scanner	●	●	●
3 year Onsite Warranty/System	OP	●	●

●: Standard OP: Optionally Available

Meet The Paradigm Imaging Group Employee!

Meet Eric Hanson



Eric Hanson is Paradigm Imaging’s Regional Sales Manager for the Eastern United States. Born and bred in New Jersey, Hanson started with Paradigm as the Eastern region Inside Sales Manager and is a veteran of the large format scanning and printing industry. Prior to joining Paradigm’s

team, Eric spent two years as Director of Color Graphics for Print O Stat. Hanson also served as Eastern Territory manager for Amiable Technologies and Regional Sales Manager for Colortrace; both companies are RIP software providers.

Paradigm President Randy Geesman says of Hanson “It is great to have a Sales Manager who brings such a

fantastic technical background to the job.” Even though Eric is located in a satellite office in New Jersey he enjoys working with Paradigm employees because “they are always looking for ways to help both co-workers and customers alike.” It sounds like he shares a common trait! Eric’s enjoys “the workplace challenge of blending standard communication methods with new technology-based communication methods to best inform our clients.”

Eric is finishing up a degree in Finance at Drexel University in Philadelphia, and plans to follow that with a Masters degree in Marketing.

When it is time to relax Eric loves to fish both fresh and salt-water. He feels lucky to live in an area with outstanding access to the Atlantic and many lakes and streams. Eric is a big sports fan. Having grown up in Audubon, New Jersey a town just across the Delaware River from Philadelphia he supports all the local Philly teams.

Paradigm Imaging Presented the JW1100 Printer for Drawing at IRgA!

Friday the 13th became a lucky day when Paradigm Imaging Group presented the Graphtec JW1100 (\$4,500 market value), 24” 6-color, high-speed printer as a raffle prize at the recent IRgA 2005 Annual Convention and Tradeshow.



To celebrate the introduction of the new EIS large-format multifunction system at the IRgA 2005, Paradigm Imaging arranged to present the JW1100, also exhibited at the IRgA Convention, as a raffle prize. Anyone who viewed a presentation of the EIS system was eligible for the drawing. The selection was made at the end of 3-day exhibition and Steve Mueller of BPI, Milwaukee, WI was called to be the lucky prizewinner.

**3 Year
On-Site
Warranty**

**For a
Limited Time
Get a 3 Year
On-Site
Warranty on
All Graphtec
Scanners!**

GRAPHTEC

Dealers: Ask about our Sales Rep. Incentive Program.

Available on the IS200, IS200 Pro, CS300, CS400, CS500, CS500 Pro, CS600 and CS600 Pro scanners. Warranty coverage available in the (United States including Alaska and Hawaii) and Canada. Offer expires ~~March 31, 2005~~ July 31, 2005

The **NEW CS600 42"**, full color scanner with the ability to scan thick, rigid originals up to 0.8" thick. The **CS600** is the only scanner of its kind that features a complete "hands-free" automatic thickness control function, Which automatically recognizes the thickness of the material being scanned without any user intervention.



- Faster...*
- Sharper Images...*
- More Reliable...*
- More Affordable...*

**CALL NOW!
888.221.SCAN**

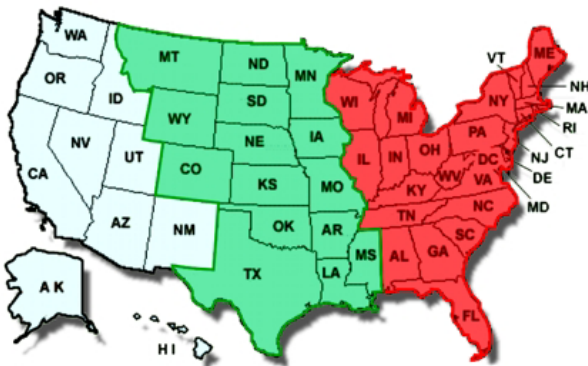


Paradigm Imaging Group

www.SCANtopia.com or Call 888.221.7226

From Canada Call: 714.432.7226

Locate Your Paradigm Imaging Sales Manager



[Eric Hanson](#)

eric@paradigmimaging.com



[Mike Ireson](#)

mike@paradigmimaging.com



[Frank Diument](#)

frankd@paradigmimaging.com

Click on your state to e-mail your nearest sales manager. All of our sales representatives can be reached at 1-888-221-7226.

Contact & Company Information



Paradigm Imaging Group
1590 Metro Drive
Suite 116
Costa Mesa CA, 92626

Toll Free: 888 221 7226
Phone: 714-432-7226
Fax: 714-432-7222

Visit Our Dealer Website at:
www.SCANtopia.com

Paradigm Imaging Group is a large format solutions provider whose expertise extends from scanning and printing products to imaging systems integration, software development and product distribution. Paradigm counts among its clients, companies in reprographics, architecture, engineering, construction and manufacturing, as well as numerous public agencies at all levels of government. Since 1989, Paradigm has grown to become a leading provider of large format scanning and document management solutions. As both a service bureau and as a custom solutions provider, Paradigm Imaging Group is uniquely positioned to share with it's clients the experience gained from using imaging products on a day-to-day basis and the knowledge gained through developing document imaging products.