

# Scanning Master PRO Color

State-of-the-art document editing software

Enhanced with various editing functions, Scanning Master Pro Color features a comprehensive set of correction functions, color/text/selected range editing functions, and data management functions that facilitate information sharing. This versatile software is used with GIS and CALS/EC editing applications.

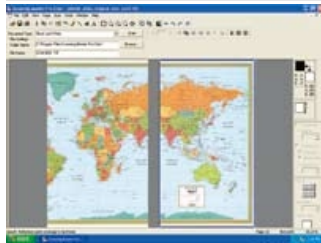
## Easy data correction

Despeckling, deskewing, 4-point correction, and linking multiple sheets of data are just a few of the various correction functions required after scanning color or monochrome data. All are easily handled by Scanning Master Pro Color

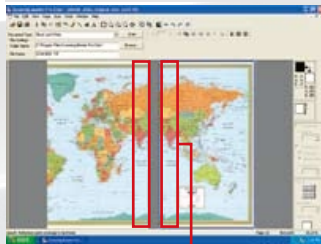
## Stitching drawings

Lets you link tiled data

Start the linking procedure.

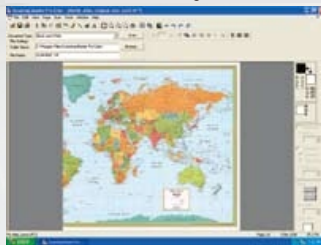


Specify the points to be linked.



The overlapping sections are automatically deleted.

After linking



## 4-point correction

Automatically corrects distorted drawings.

## Full data editing capabilities for easy data correction and erasure

Enables color consistency based on the colors in the original data and enables extracting partial data and editing data, while the broad range of text tools makes it easy to process drawings.

## Color editing

Lets you convert colors into monochrome or reduce the number of colors.

## Fill

Lets you color data using graduated color, set translucent colors, or add frames.



## Text input

In addition to standard text input, this function lets you comment & markup your file.

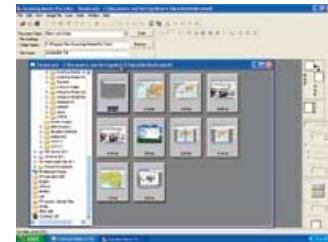


## Easy data management and sharing

The tree and thumbnail view data management system supports various formats and lets you confirm file locations at a glance, facilitating sharing of scanned and/or edited data among various applications. Also includes a comprehensive search function.

## Tree and thumbnail view management system

Eases data replacement and copying/cutting tasks.



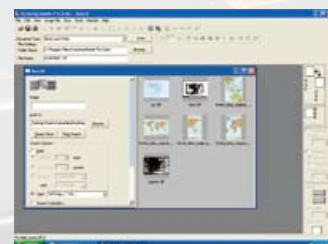
## Viewer function

Lets you check contents via the thumbnail viewer. Enables viewing of multi-page TIFF files.



## File search

Lets you search with various search parameters while viewing thumbnails.



**Paradigm Imaging Group** - Distributor of Large Format Scanning & Printing Solutions!

3010 Red Hill Avenue, Costa Mesa, CA 92626 | 888.221.SCAN(7226) or 714.432.7226 in Canada

[www.SCANtopia.com](http://www.SCANtopia.com) or [info@paradigmimaging.com](mailto:info@paradigmimaging.com)