



Graphtec

**SK280**

Canon

**iPF710**

**COMBO!**

Available for a **LIMITED TIME ONLY!!**



(shown here with an optional Ergo Stand)

Powered By:

## Scan Master21+

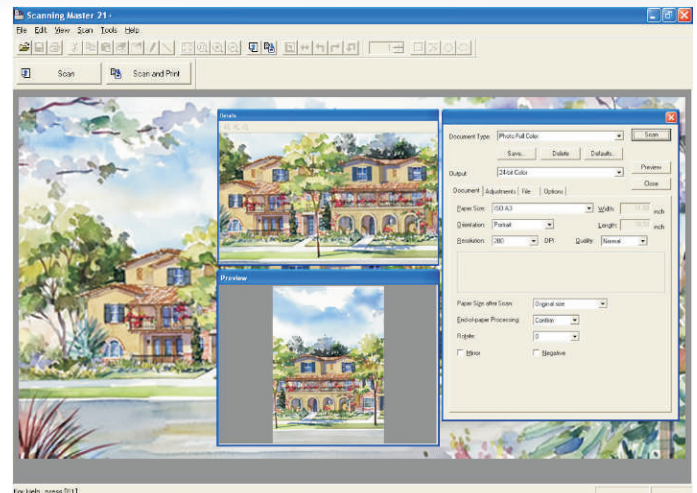
Scanning Master 21+ Software enables all IS & CS series Graphtec scanners to perform Scan-to-File, Scan-to-Print, or Scan-to-PDF document management tasks. It also allows users to integrate a large-format copying system by combining their scanner with a large-format printer.

Scan-to-File

Scan-to-Print

Image Editing & Markup

Scan-to-PDF



## Scanner Specifications

## Graphtec SK280

<b>Scanning Width</b>	36" (centered) / 38" (max. document width)		
<b>Document Thickness</b>	up to 0.8mm (including the carrier sheet)		
<b>Optical Resolution</b>	600 dpi		
<b>Interpolated Resolution</b>	upto 1200 dpi		
<b>Main scanning system</b>	Contact Image System (five A4 sensors in a zigzag pattern)		
<b>Max. Scanning speed at 400 dpi:</b> (High Speed   Normal   High Quality)			
<b>_ Monochrome</b>	6.0	3.5	3.0 inches/sec.
<b>_ Gray</b>	6.0	3.5	3.0 inches/sec.
<b>_ Color (8-bit, 24-bit)</b>	2.0	1.0	0.75 inches/sec.
<b>Scanning precision</b>	+ -0.1% or + -1 pixel, whichever is larger		
<b>Gradation</b>	Monochrome: Bi-level, intermediate tones (dithering, error diffusion)   Gray: 256 shades   Color: 24-bit		
<b>Threshold value</b>	A DSP (digital signal processor) enables automatic setting of the threshold value (monochrome scans only)		
<b>Color space</b>	RGB		
<b>Sensor</b>			
<b>_ Total number of pixels captured</b>	22,020 x RGB = 66,060		
<b>_ Light source</b>	LED, RGB		
<b>_ Output</b>	Color : 42bits/pixel, Grayscale : 14bits/pixel		
<b>Interface</b>	USB 2.0 (High Speed)		
<b>Rated Power Supply</b>	100 to 120/200 to 230 VAC + -10%, 50/60 Hz		
<b>External Dimensions</b>	43.2 x 6.3 x 12.7 inches		
<b>Weight</b>	57lbs		

## Printer Specifications

## Canon imagePROGRAF iPF710

<b>Printing System</b>	5-Color Dye & Pigment Based Inks (Dye - CMYK / Pigment - Matte Black MBK)
<b>Print Head Technology</b>	FINE - (Full Lithography Ink-Jet Nozzle Engineering)
<b>Number of Nozzles</b>	2,560 per Color 5,120 Matte Black
<b>Ink Capacity</b>	130ml per color
<b>Media Width</b>	Roll Feed: 10-36" Wide Cut Sheet: 8-36" Wide
<b>Printable Margins</b>	Roll Feed: all sides (.12") 3mm or 0" for Borderless Cut Sheet: all sides (.12") 3mm
<b>Media Thickness</b>	0.07 - 0.8mm
<b>Operating System</b>	Windows 98se/Me/2000/XP/2003 Server, MAC OS 9.1/X 10.2-10.4 Built-in: USB 2.0 High Speed, 10/100Base-T/TX Optional: IEEE1394 Firewire
<b>Interface</b>	AC (100-240V) 50-60Hz
<b>Power Supply</b>	43.2" x 59.3" x 29.6"
<b>Dimensions</b>	(1097mm x 1507mm x 752mm)
<b>Weight (w/ stand)</b>	Approx. 139 lb. (58.8kg)