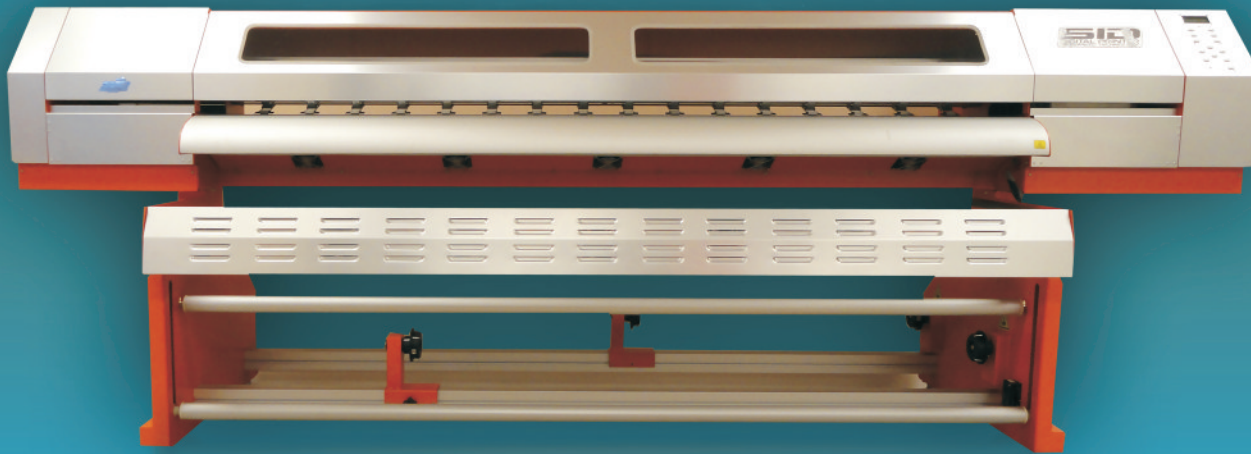


SID Triton Series

Distributed by Paradigm Imaging Group



Key Features

- Single or Dual Epson DX5 four-color Print Head
- Print speeds up to 387 sq. ft. /hr
- True resolution of 1440 dpi
- Variable 7 to 21 picoliter dot sizes
- Max printing area – 98”
- Automatic cleaning and capping system
Individual pre, platen and post heaters for quick drying
- Bulk ink supply system – 1 liter per color
- Low Operating Costs – ink prices \$64 per liter - 6 cents per sq.ft.
- Adjustable printer carriage height 2mm up to 6mm (1/4”)
- PhotoPRINT DX 10 RIP
- 1 Year Limited Warranty including Print Head
- Suggested Retail: Starting at \$16,900

98”, 83” & 63” Wide Format Eco Solvent Printer

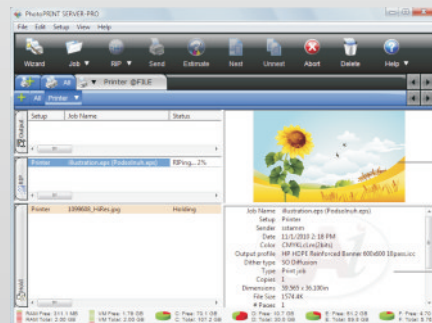
SID Triton Series

Long known for their rugged production performance, the SID line of wide format printers reaches a new pinnacle with the Triton Series. These eco-solvent printers combine the latest print head technology from Epson with innovative design elements and solid construction. Producing stunningly vivid images at a very low production cost, the Triton will surpass your highest ROI expectations.

The tri-sectional heating system ensures print quality and quick drying, while the balanced automatic media take-up system is flexible and user-friendly. Reliable AC servo motors control the print carriage and media feed systems for peak printing performance. The height adjustable printer carriage enables printing on substrates such as foam board and polystyrene.

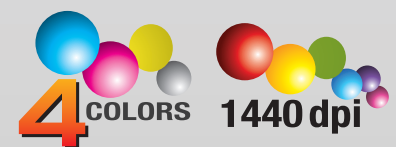
Starting at just \$16,900, the Triton is an affordable, reliable, flexible solution to all your sign and banner production needs.

PhotoPRINT DX 10 RIP Software



PhotoPRINT DX is an unparalleled layout package with design capabilities for text, shapes and effects with the added versatility to RIP and print to two devices simultaneously. The powerful Nesting feature allows you to group multiple print jobs and print multi-page jobs horizontally to optimize media usage. Accurately calculate the true cost of every print job with the new Ink Estimation tool included with PhotoPRINT.

signage indoor/outdoor banners
trade show graphics



Specifications

	Triton S 250	Triton S 210	Triton 210	Triton 160
Printhead	1440 nozzles • Variable dots • 7 • 14 • 21 picoliters			
Number of printheads	Dual Epson 4 color print head	Dual Epson 4 color print head	Single Epson 4 color print head	Single Epson 4 color print head
Head height	Adjustable between 2mm (.08") - 6mm (.25")			
Resolution	Up to 1440 dpi			
Ink Cartridges - Type	Eco Solvent			
Colors	CMYK			
Capacity	1 liter per cartridge			
Media				
Max. printing width	98" (2500 mm)	83" (2100 mm)	83" (2100 mm)	63" (1,600 mm)
Feeding System	Roll to roll or single sheet (max. media roll weight: 176 lbs - 80 kg & max. media height: 10mm)			
Types	Vinyl, perforated vinyl, polyester, banners, paper, canvas, foam board and polystyrene			
Output				
720 dpi (4 passes)	387 sq.ft./h (40 m2/h)	365 sq.ft./h (34 m2/h)	182 sq.ft./h (17 m2/h)	161 sq.ft./h (15 m2/h)
1080 dpi (6 passes)	258 sq.ft./h (26 m2/h)	236 sq.ft./h (22 m2/h)	129 sq.ft./h (12 m2/h)	107 sq.ft./h (10 m2/h)
1440 dpi (8 passes)	193 sq.ft./h (20 m2/h)	182 sq.ft./h (17 m2/h)	107 sq.ft./h (10 m2/h)	86 sq.ft./h (8 m2/h)
Cleaning System	Automatic Cleaning and Capping System			
Heating and Cooling System	Pre, platen and post heaters and cooling fans			
Interface	USB 2.0			
RIP Software	Photo PRINT DX 10			
Voltage	AC 220V / 230V, 50Hz / 60Hz			
Operational Temperature	Temperature 68-74°F (20-23°C) Humidity 40% ~ 60%, non-condensing			
Equipment dimensions (L x W x H)	148" x 39" x 49"	133" x 39" x 49"	133" x 39" x 49"	111" x 34" x 50"
Package dimensions (L x W x H)	153" x 43" x 33"	137" x 43" x 33"	137" x 43" x 33"	115" x 38" x 33"
Equipment weight	565 lbs (242 kg)	496 lbs (242 kg)	496 lbs (242 kg)	333 lbs (151 kg)
Package weight	1007 lbs (430 kg)	930 lbs (430 kg)	930 lbs (430 kg)	686 lbs (311 kg)

*Specifications subject to change without notice. Data speed can vary as much as 5% depending on the speed of the computer.



1 Year Limited Warranty